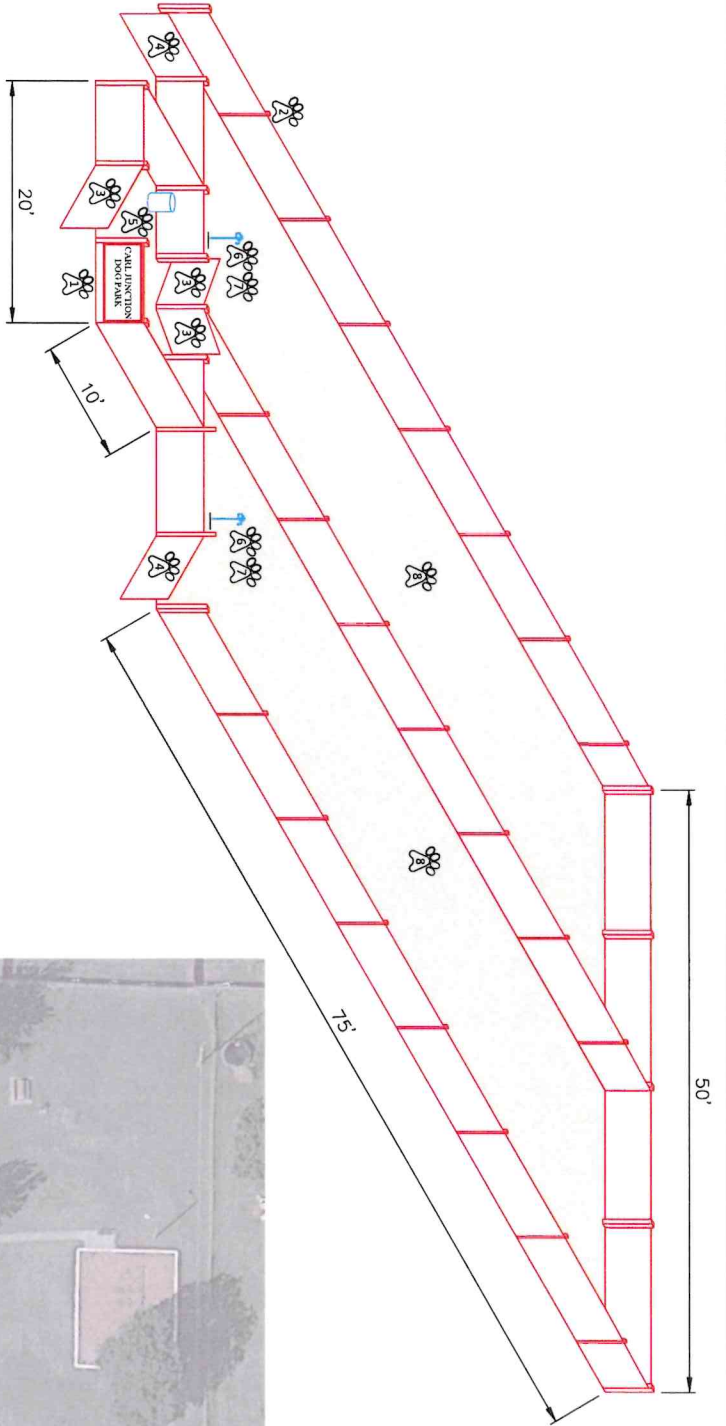




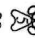
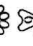


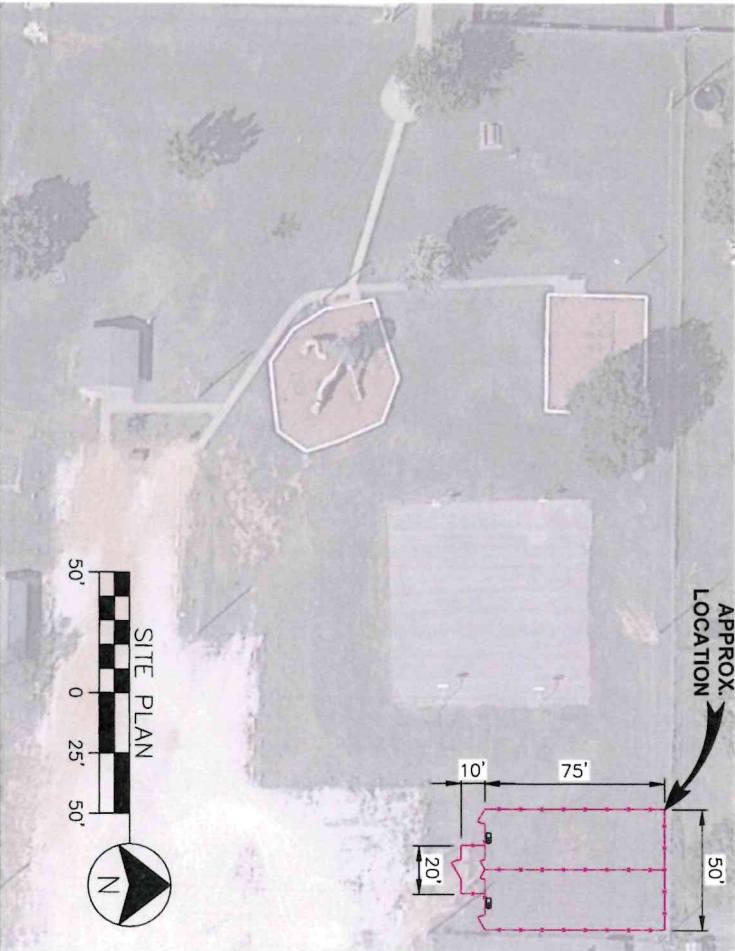


The City of Carl Junction is accepting bids from interested contractors for a fenced in area at Country Club Park for a dog park. This is for the fenced in area only. Signage, pet waste station, frost-proof hydrants and watering troughs will be completed by the city. Selected contractor must have a City of Carl Junction Business license. Please submit bids to: Dog Park Bid, Attn: Steve Lawver, City Administrator, P.O. Box 447, 303 N. Main, Carl Junction, MO 64834. Email submission of bid is acceptable, send submission to cjcityadm@carljunction.org. Submissions must be received by 4:30 pm, February 8th, 2024. The City of Carl Junction reserves the right to accept or reject any and all bids. The City of Carl Junction is an Equal Opportunity Employer and encourages MBE/DBE submissions. For a copy of the proposed dog park specifications please send a request to cjcityadm@carljunction.org or pick one up at City Hall, 303 N. Main St. Carl Junction, MO 64834.



FEATURES

-  DOG PARK SIGN
-  4' CHAIN LINK FENCE INCLUDING CORNER POSTS, POST CAPS, LINE POSTS, TOP RAILS, LOWER TENSION WIRE AND HARDWARE.
-  (3) SELF-CLOSING GATES (4)
-  (2) MAINTENANCE LOCKABLE GATES (6)
-  (1) PET WASTE STATION
-  (2) FROST PROOF HYDRANT
-  (2) DRAINABLE WATER TROUGH
-  GRASS (SEED & MULCH)



ALGIEIER, MARTIN and ASSOCIATES, INC.
 CONSULTING ENGINEERS and SURVEYORS
 7231 EAST 24th STREET JOPLIN, MISSOURI 64804 (417) 690-7200

DATE: 12/2023
 DRAWN BY: MCK
 CHECKED BY: MCK
 PROJECT: PROPOSED DOG PARK
 LOCATION: CARL JUNCTION, MISSOURI

DATE	REVISION

DATE: 12/2023
 DRAWN BY: MCK
 CHECKED BY: MCK
 PROJECT: PROPOSED DOG PARK
 LOCATION: CARL JUNCTION, MISSOURI